

Photographing Wounds with REPAIRD

Capturing the Image

Images are an important way to tell the REPAIRD story. Along with the data we captured by the Questionnaire, the images chart the remarkable healing journey of wounds treated with REPAIRD. Please provide clear, usable pictures of the wounds you treat with REPAIRD as part of our case study program. Images should be:

Focused on the wound



- Center the wound in the frame.
- Orient your camera horizontally, rather than vertically.
- Do not use zoom; position your camera close to the wound and focus on it.
- We don't need to see much of the animal at all; you'll provide that information when you complete the questionnaire.

Well lit and in focus



Do



Don't

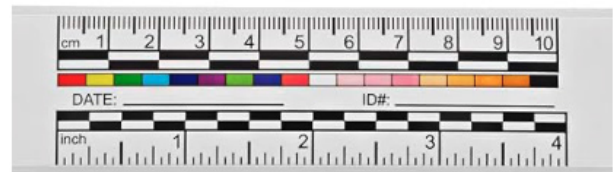
- You may use natural light or flash, but be consistent. If you use a flash for the first picture, please use it for the last.
- Double check your image to ensure it's framed correctly, well lit and in focus.

Consistent



- Recreate the same angle, lighting and the same surface area as before.

Measurable



- Please use the self-adhesive wound measurement stickers provided if possible below or above the wound.
- You may use the provided McKesson Clear Wound Measuring Guides, which covers the wounds, to help you complete your questionnaire, but it's not necessary to use it in the photographs.



Image Requirements

Please take images as follows:

Day 1 - after wound prep and before treatment with REPAIRD; **required**

Day 3 - wound surface, without any packing or bandages

Day 7 - same; **required**

Day 14 - same; not required but helpful

Day 21 - same; not required but helpful



Photo series of chronic shoulder wound in a pig.

Technical Information

Images should be uploaded on the Partner Portal. There are instructions provided, but it's simple. Ensure your image is:

High resolution (minimum of 2MB)

JPG or HEIC is acceptable

If you have an iPhone:

- Default camera resolution is typically set to 24MP (mega pixels), but you can adjust it to 12MP or 48MP on supported models. To check, go to Settings > Camera > Formats. Ensure you have a minimum of 12MP choose the desired resolution.
- You can turn off Live photos.
- Do not choose a non-standard Photographic Style or apply any filters. (e.g., Cool, Warm, Contrast, Vibrant, etc.)

If you have an Android:

- Every Android phone/camera is different. Check your settings.
- Most default camera settings are fine.
- Enable HDR (high dynamic range) for high-definition resolution.
- Select landscape/horizontal for your orientation.



Be sure to visit the Partner Portal to submit your picture and complete your brief questionnaire.

Questions? Connect with us at
agrilogicsanimalhealth.com/partnerportal
or info@agrilogicsanimalhealth

